



# SA Health Infrastructure



# 2022 SA HEALTH SUPPLIER CONFERENCE



Government  
of South Australia

SA Health

# Presenter

**Mark Filipowicz**

A/Executive Director, Infrastructure

SA Health

# Major Infrastructure Capital Projects

- > New Mount Barker Hospital & ED Upgrade
- > Flinders Medical Centre Upgrade
- > Noarlunga Hospital Upgrade
- > 48-Bed Expansion of Lyell McEwin Hospital
- > Modbury Hospital Upgrades
- > SA Ambulance Service Emergency Operations Centre/State Health Control Centre
- > Ambulance Stations – New & Rebuilt
- > Regional Hospital Upgrades
- > The Queen Elizabeth Hospital Stage 3 Redevelopment
- > The Repat Health Precinct

# New Mount Barker Hospital & ED Upgrade

- > As part of the 2022 State Election, the State Government committed \$220 million to the design and delivery of a new 102-bed Hospital for the Mount Barker and Adelaide Hills community. This significant initiative will:
  - Triple the inpatient capacity, relative to the existing Mount Barker and District Soldier's Memorial Hospital.
  - Expand capacity in specialist obstetric beds, rehabilitation beds, medical and surgical beds, and palliative care beds.
  - Establish a new 12-bed mental health unit, consistent with the Government's broader commitment to expand accessible mental health services for South Australians.
- > Construction works are progressing for the new ED at the Mount Barker and District Soldier's Memorial Hospital (funded by the Commonwealth).
- > Upon its planned completion in April 2023, the new ED will increase Mount Barker's ED capacity from 4 treatment spaces to 17.
- > The ED project will deliver an additional 76 sealed car parks.

# New Mount Barker Hospital Architectural Impressions



# Flinders Medical Centre Upgrade

- > State and Commonwealth Governments are co-funding a \$400 million upgrade of Flinders Medical Centre (FMC), the Repat Health Precinct and Margaret Tobin Centre as the first stage of the Southern Area Health Direction.
- > Seven-year program of works starting in 2022-23.
- > Works at FMC will include:
  - South Wing Expansion (90 inpatient beds, 36 daybeds).
  - 9 additional operating theatres.
  - A new Flinders Eye Clinic.
  - Six more beds for the Intensive Critical Care Unit.
  - Expanded medical imaging and procedural services.
  - Ward refurbishments.
  - New 12-bed Psychiatric Intensive Care Unit (PICU) and refurbishment of the existing PICU to deliver an 8-bed open acute unit.
  - Engineering plant upgrades.

# Noarlunga Hospital Upgrade

- > \$38 million in capital funding has been committed to this project.
- > Integrated design and construction will occur with the 24-bed mental health rehabilitation service also to be delivered at Noarlunga Hospital (part of a \$124 million capital commitment for 72 mental health beds in metropolitan Adelaide).
- > Originally funded for FMC, 24 inpatient beds have been reallocated to Noarlunga Hospital following the \$400 million commitment to upgrade FMC.

# 48-Bed Expansion of Lyell McEwin Hospital

- > The State Government has committed \$47 million to deliver a 48-bed expansion of Lyell McEwin Hospital (LMH). Two 24-bed units will be constructed above the existing Building A inpatient wards and below the existing helipad.
- > Originally announced as sub-acute beds, infrastructure and clinical services planning has resulted in the need for acute beds to be provided at LMH.
- > A Request for Managing Contractor tender is anticipated to be released this month.
- > Construction is forecast to begin February 2023 and be completed in mid-2024.





Current Helipad & Courtyard Views



Indicative Helipad & Courtyard Views

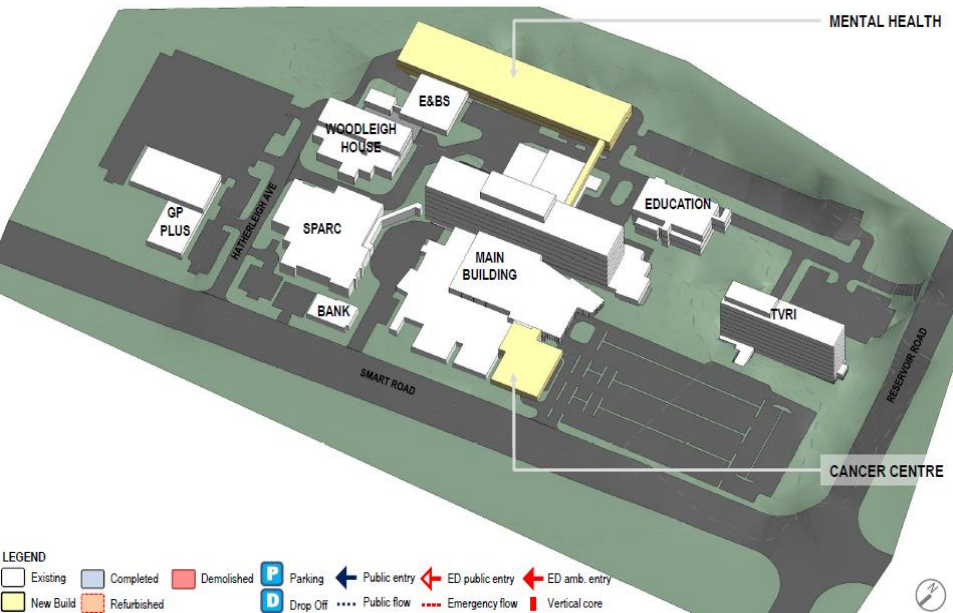


# Modbury Hospital Upgrades

- > A new 24-bed mental health rehabilitation service, delivered as part of the State Government's commitment for 72 new mental health rehabilitation beds in metropolitan Adelaide (24 at TQEH, 24 at Noarlunga).
- > To be integrated with the 20-bed Older Persons Mental Health Unit to provide a \$92 million investment in mental health at Modbury Hospital.
- > \$25 million in capital funding has been allocated to establishing a new Modbury Hospital Cancer Centre.
- > 12 chemotherapy chairs and facilities for outpatient appointments will be incorporated into the build.
- > The Project Brief has been provided to DIT for the tendering of consultants.
- > Construction is anticipated to begin in January 2024 and be complete by end-September 2025.

## NALHN Infrastructure Master Plan – Modbury Hospital

Committed Projects



# SA Ambulance Service Emergency Operations Centre and State Health Control Centre

- > State Government has committed \$120 million over the forward estimates to build a new Emergency Operations Centre (EOC) / State Health Control Centre (SHCC) by end-June 2025.
- > SA Health conducted a market call to identify potential land opportunities to accommodate construction of the EOC/SHCC on the city fringe.
- > The market call closed on 28 October 2022 and all responses are currently being reviewed.
- > A review of potential government-owned sites is ongoing.
- > A draft project scope and brief are currently being prepared, with a draft to be provided by mid-December 2022.

# Ambulance Stations New & Rebuilt

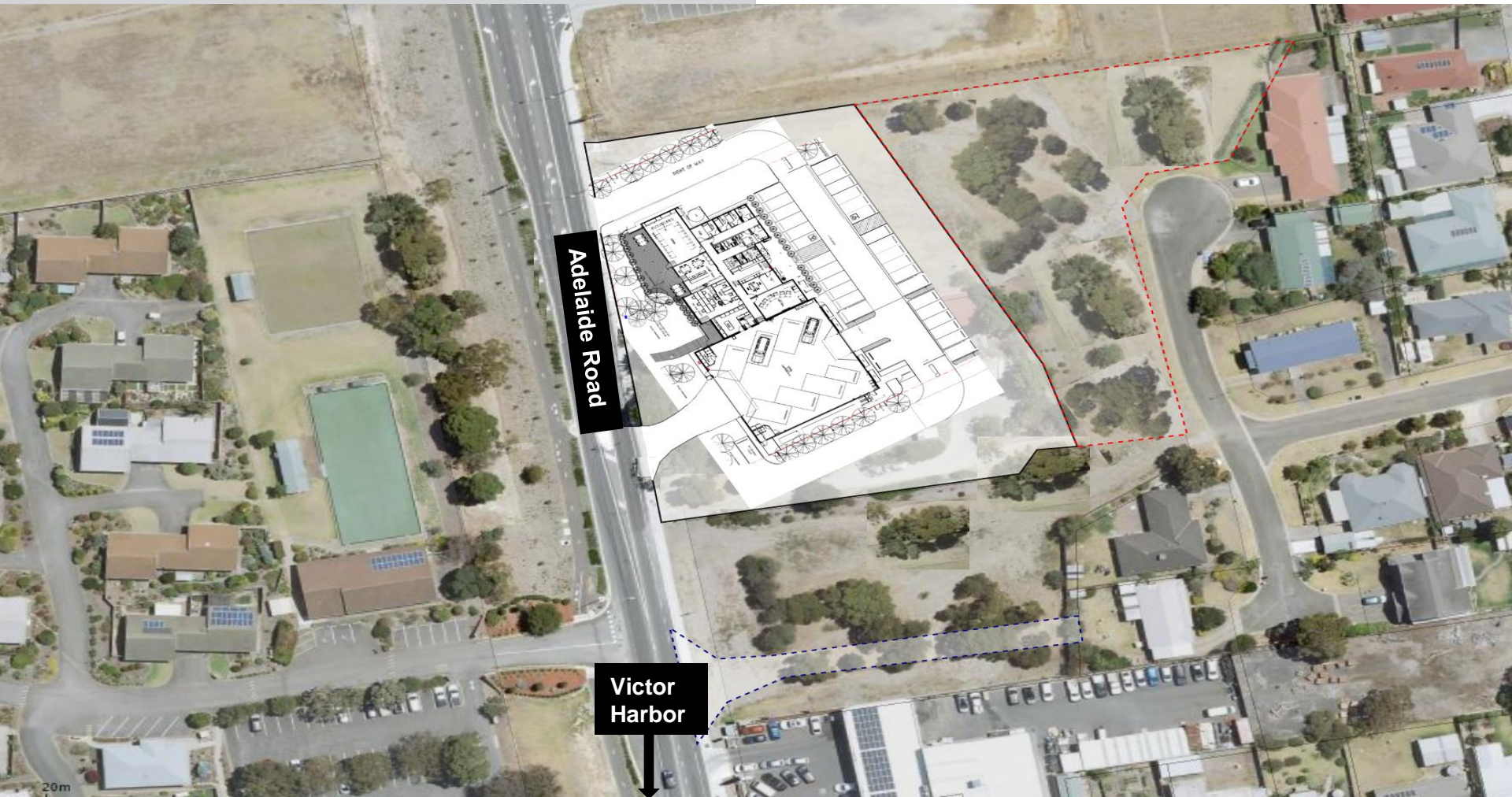
- > State Government has committed \$19.6 million in capital funding to build four new Ambulance Stations in high-priority areas of need: Edwardstown, Golden Grove, Norwood and Woodville.
- > Site for the Norwood station has been announced (corner Magill Rd/Portrush Rd).
- > State Government has committed \$18.4 million in capital funding to rebuild and expand four Ambulance Stations in Campbelltown, Gawler, Mount Barker and Victor Harbor.
- > Site for the Victor Harbor station has been announced (Adelaide Rd, Hayborough).
- > Design teams for all stations have been engaged.
- > These new stations will accommodate new Ambulance crews and vehicles, improving overall Ambulance response times and providing better patient outcomes and community care.
- > SA Health have been working closely with Renewal SA and Local Councils to identify suitable land options.

# New Norwood Ambulance Station Site



# Rebuilt Victor Harbor Ambulance Station

A site for the Victor Harbor Ambulance Station has been announced for Adelaide Road, Hayborough with space for eight vehicles.



# Regional Hospital Upgrades

- > \$20 million in capital funding has been allocated to upgrading Mount Gambier Hospital:
  - \$8 million to upgrade the Emergency Department.
  - \$9 million for six mental health beds.
  - \$3 million for two drug and alcohol detox beds.
- > A further \$8 million to the first stage of upgrades at the Naracoorte Hospital.
- > Delivery of both upgrades has been bundled into a single service request to DIT.
- > \$10 million has been allocated to upgrade Kangaroo Island Health Service (KIHS) as an intended upgrade of the Hospital. \$5 million has also been awarded to KIHS by the Commonwealth to provide accommodation for SA Health workforce, locums and visiting specialists providing services at KIHS.

# Regional Hospital Upgrades (cont'd)

- > \$12 million has been allocated to upgrade the Port Pirie Hospital ED as the first stage of a future redevelopment of the Hospital. The scope and deliverables will be determined by a 'design to budget' approach.
- > \$8 million to upgrade ageing infrastructure at Port Augusta Hospital.
- > \$14.4 million to upgrade the Whyalla Hospital to a 12-bed ED and 6-bed High Dependency Unit, funded by the Commonwealth Government (\$11.4 million) and a further \$3 million in Asset Sustainment Program funding.
- > \$15 million to upgrade the Gawler Hospital ED and associated works (car parking, staff facilities).



# The Queen Elizabeth Hospital Stage 3 Redevelopment



- > The Stage 3 Redevelopment of The Queen Elizabeth Hospital is ongoing. In addition to works already delivered, the new Clinical Services Building will comprise:
  - A new Emergency Department.
  - Operating Theatres and Day Surgery.
  - Intensive Care Unit.
  - Medical Imaging.
  - Core Pathology Laboratory.
  - Central sterile supply department.
  - General rehabilitation services.
  - Associated site infrastructure upgrade works.
- > \$314 million capital program.
- > Built Environs are currently progressing with base building structural works, with internal fit-out works and medical equipment installation to progress through 2023 and into 2024.
- > Construction remains on track for completion in early 2024 and commissioning in mid-2024.

# Repat Health Precinct

- > Conversion of Wards 3 and 4 at the Repat to create a new 26-bed Geriatric Evaluation and Management inpatient service.
- > 6-8 bed unit for SALHN's Complex and Restorative Care service.
- > HammondCare are building a 72-bed dementia care facility, due for completion mid-2023.
- > Nexus Hospitals will start construction in 2023 of a \$140 million surgical and medical centre.
- > Works on the new Statewide Eating Disorder Service facility are expected to commence in 2023, including capacity for 5 overnight beds.
- > Model of Care is being developed for transitional accommodation for specialised rehabilitation consumers.



# **Government of South Australia**

---

SA Health